



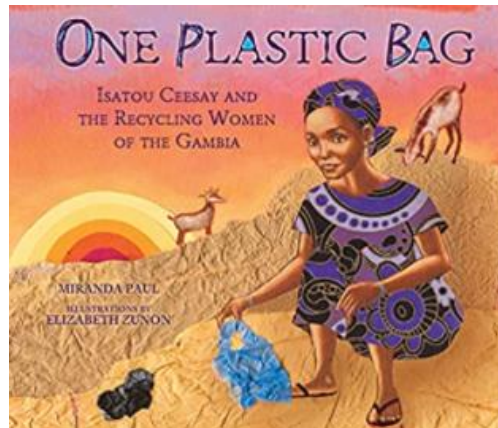
# What We're Up To!

14<sup>th</sup> March 2022

Reception News

## What a Wonderful World!

For the next 2 weeks our focus text will be the fiction book **One Plastic Bag**. Your child will be taught that the author is Miranda Paul. The focus of this half term is to look after our planet and animal habitats. We will look also at planting and recycling.



Our song for this half term is 'Care for Your World'.

<https://www.youtube.com/watch?v=tjKxtdtUwgM>

We know this song is called a hymn, and a hymn is a religious song or poem of praise to God or a god.

Our next book is **The Last Wolf** by Mini Grey.

Our Key Question for the fortnight is: Why are plastic bags bad for the environment?



### Phonics

We are continuing with our Phase 3 sounds.  
Our sounds this week will be...

### Reception Spring 2

	Phase 3 graphemes
Week 1	review Phase 3: ai ee igh oa oo ar or ur oo ow oi ear
Week 2	review Phase 3: er air words with double letters longer words
Week 3	words with two or more digraphs
Week 4	longer words words ending in -ing compound words
Week 5	longer words words with s in the middle /z/ s words ending -s words with -es at end /z/

Our **tricky words** are *sure, pure, was, into, she, he, we, me, be* and *of*

For more information please check out

<https://www.littlewandlelettersandsounds.org.uk/resources/for-parents/>

### Reminders

#### Absences

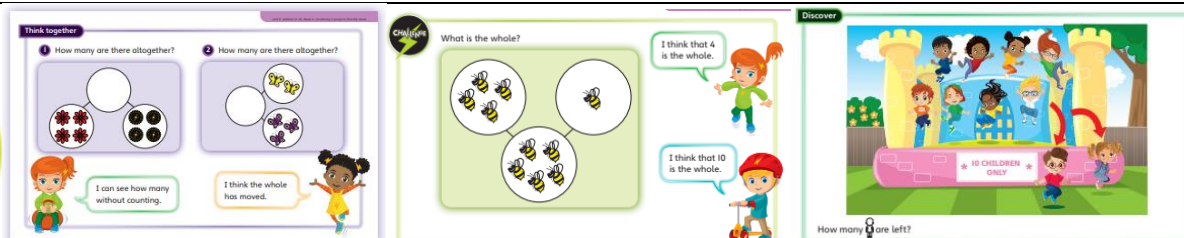
If your child is unwell and cannot attend school, please contact the school office.

#### Class Dojo

Please be aware I am unable to read any messages on Dojo during the hours your child is at school. If you need to make urgent contact with me, please call the school office.

#### School Dinners

Please remember to pre-order your child's meal on ParentPay every day to ensure your child receives their choice. If you are having trouble please contact Mrs Luff in the School Office.



**For the next fortnight in Maths, we will be learning about Addition to 10 and Subtraction**  
**Children who have mastered this concept will be able to...**

- use the language of part and whole.
- count how many in each part and recount to find how many altogether in the whole group.
- represent a subtraction number bond to 10 using resources in a part-whole model.
- understand the structure of the subtraction calculation/ story and be able to apply the taught method efficiently.

### Dates for your diary

**Thursday 18<sup>th</sup> March:** Comic Relief 'Dress to impress', Remember your Red Nose! £1 donation to be made via ParentPay.

**Tuesday 29<sup>th</sup> March** – Welcome to our School Early Years Parent! 2.15pm

**End of term:** 7<sup>th</sup> April

**Summer Term begins:** 25<sup>th</sup> April

### Parents evening

We are so excited to be able to invite you into school for Parents Evening this year 😊

Please make an appointment online, any issues please contact Mrs Luff at the school office. I cannot access this to view or make appointments.

So pleased to be able to invite you in to our classroom! Finally!

# Wow Work!

